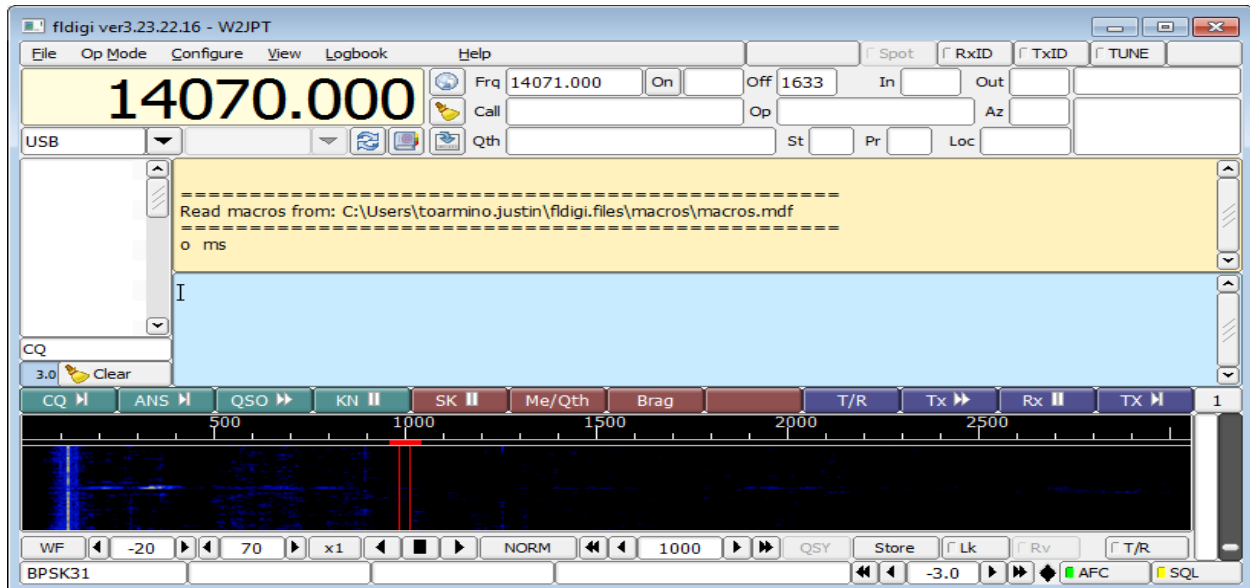

QUICK SETTINGS GUIDE TO LINKING FLDIGI AND FLMSG

VERSION 1.0 - 3/20/2017

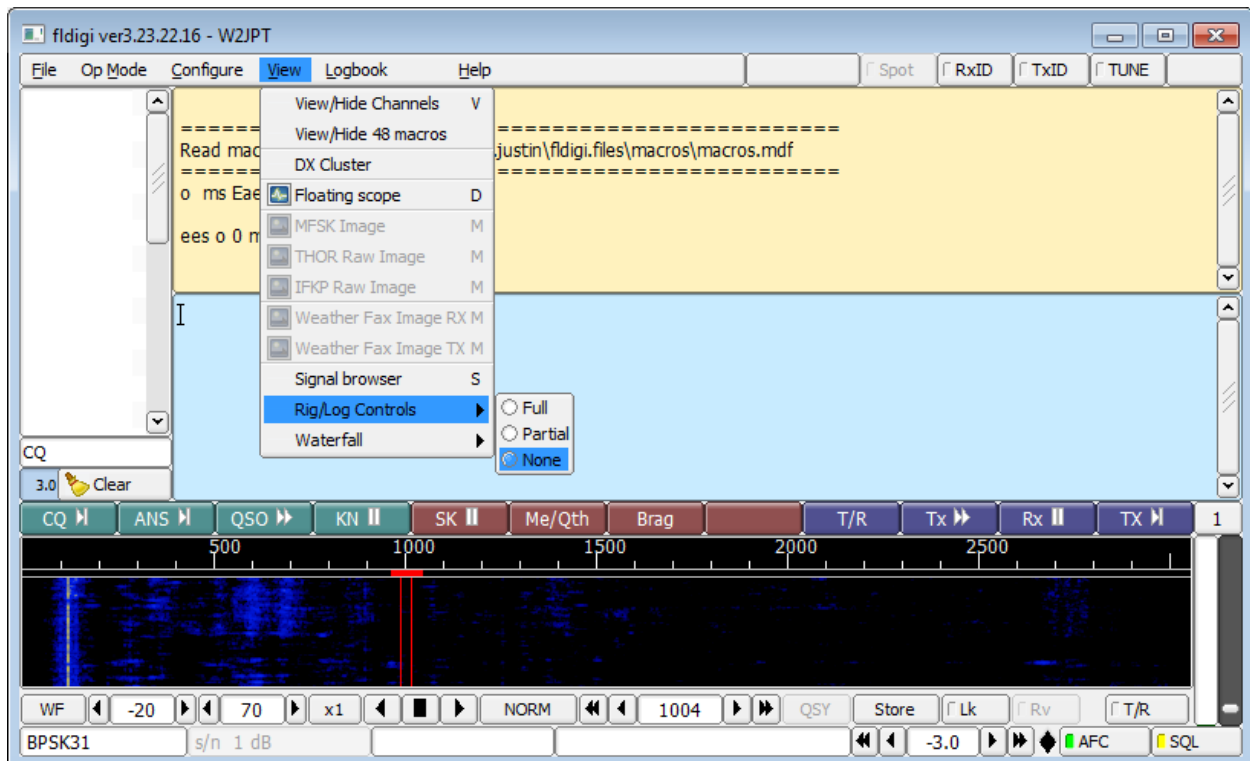
Written By W2JPT

FLDIGI SETTINGS

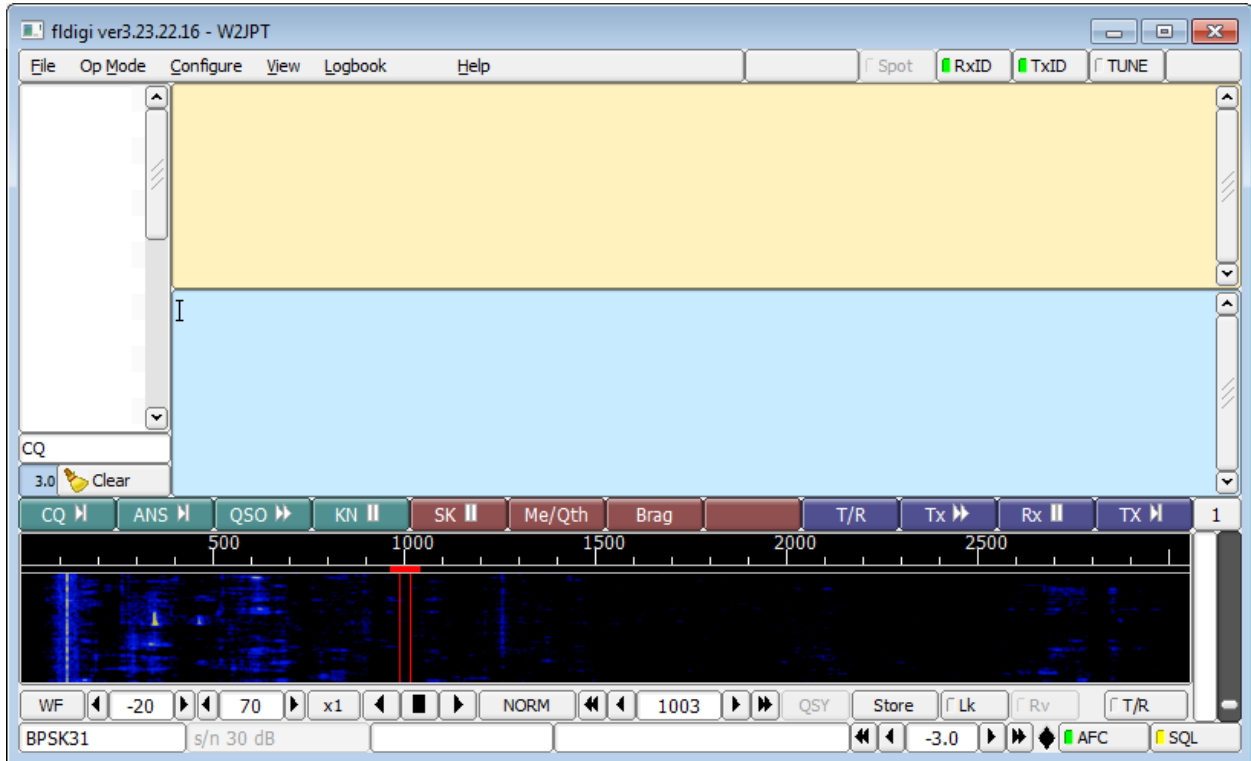
From a fresh install after the wizard your screen will look like this.



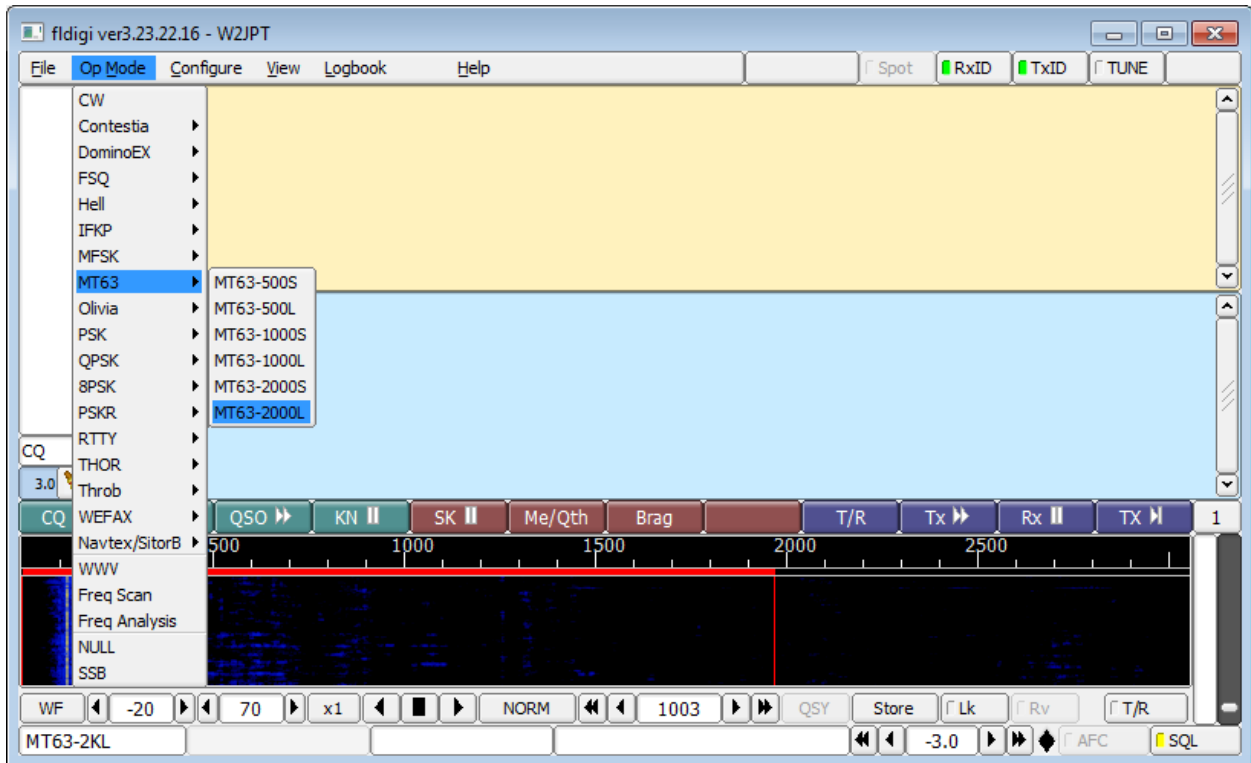
(optional) I like to change the interface to remove the rig control for a cleaner look.



Select the RxID and TxID in the top right so you receive and transmit ID information.



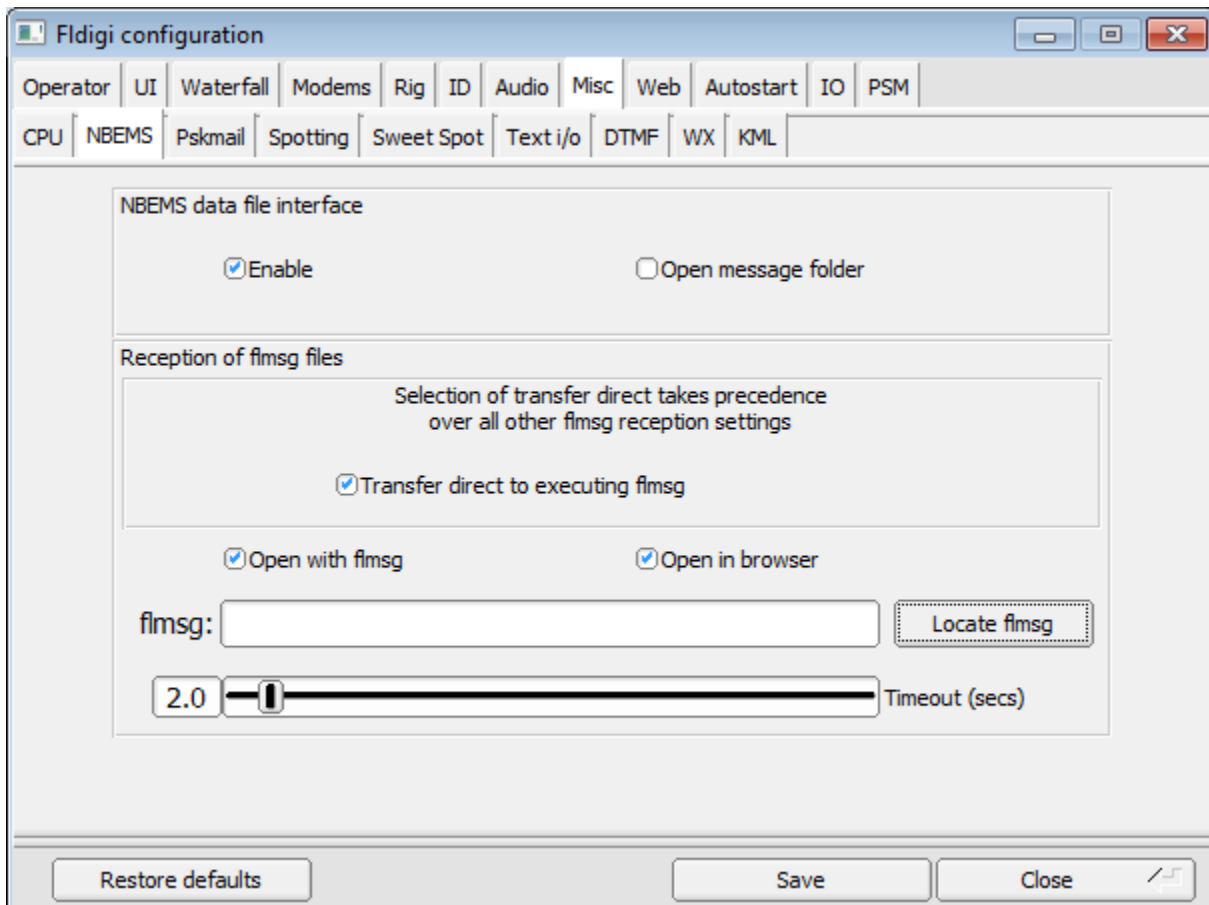
Now select the Op Mode. We use MT63-2000L for our NET.



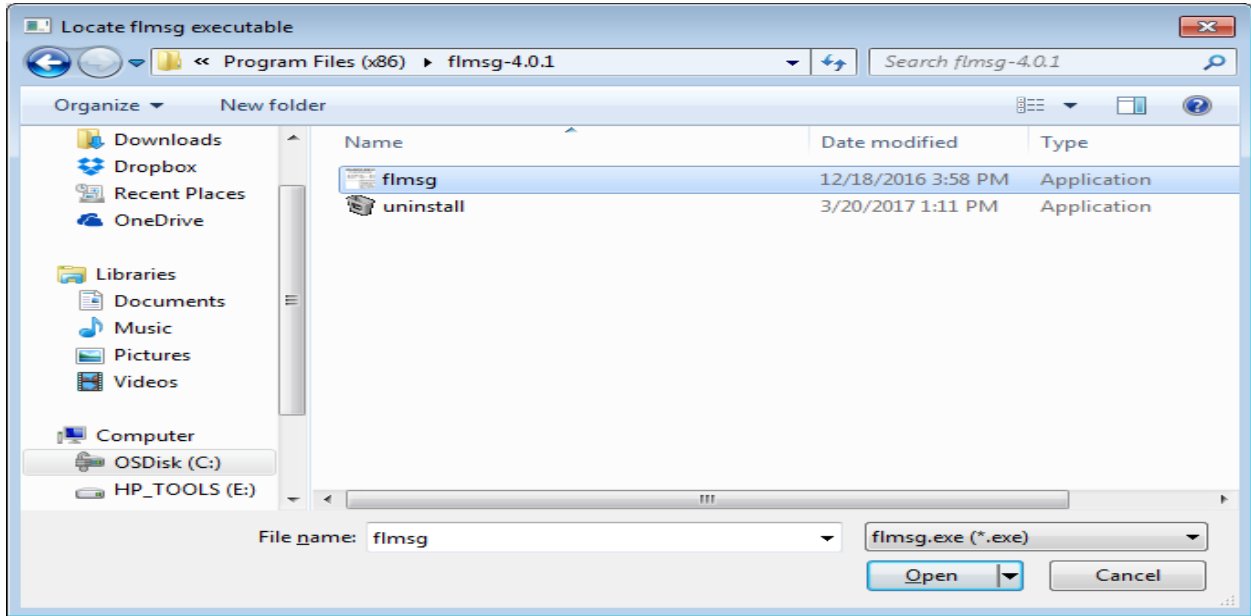
To link fldigi to fldigi select Configure -> Misc



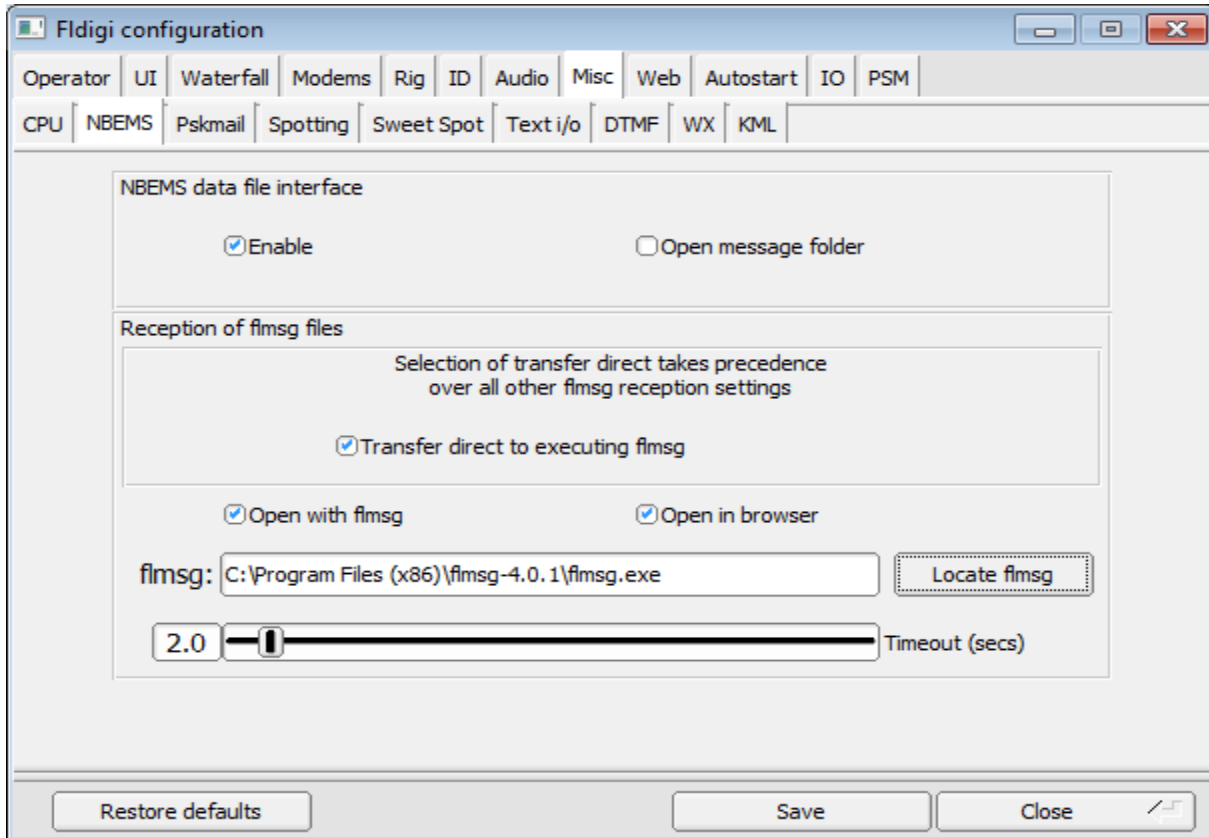
Select the NBEMS tab and click on the Locate fldmsg button.



Browse to the flmsg executable. For a default install it will be located at C:\Program Files (x86)\flmsg-x.x.x. Click open.



You should now see the path to Flmsg. Click save then close.



Flmsg will open when receiving a Flmsg formatted form via Fldigi.